



PERFECT MOTORS

TOYOTA HIACE AMBULANCE

Stock ID 469833

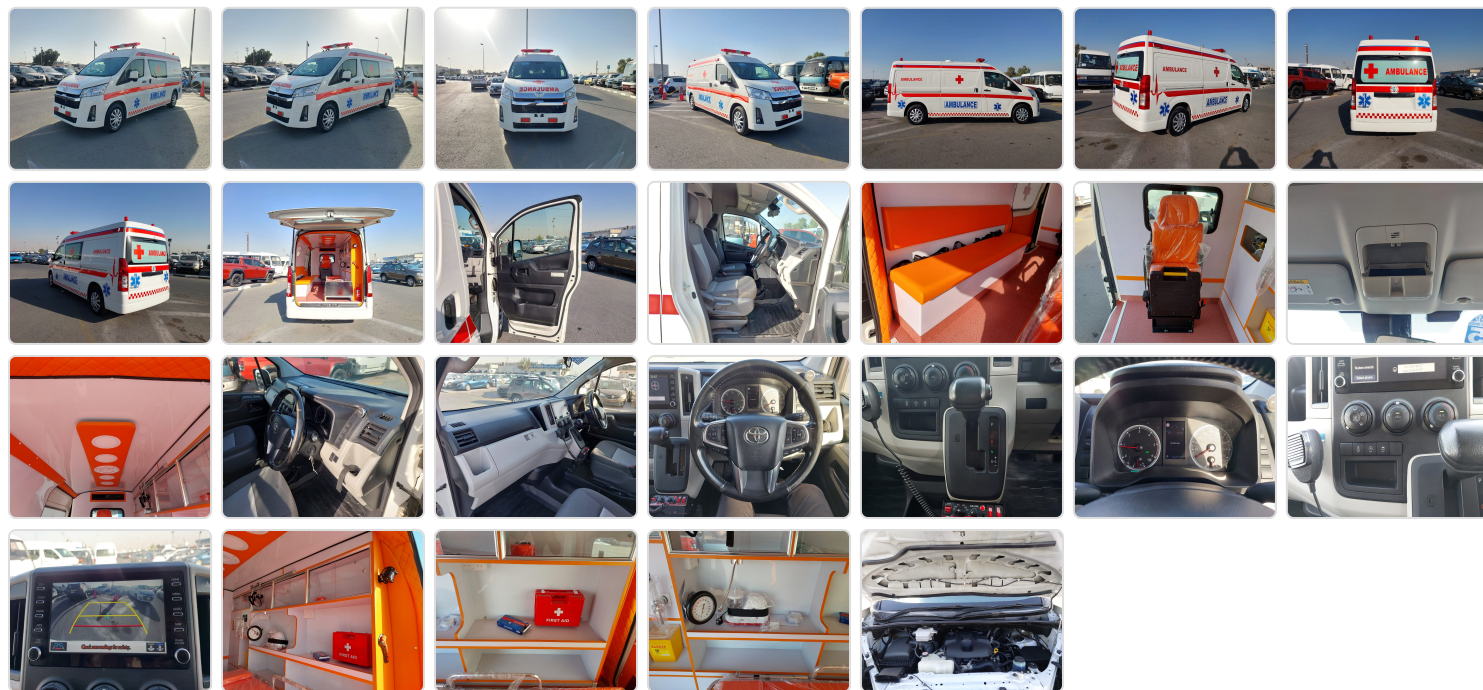
Registration Year: 2020

Manufacture Year: 2020

Vehicle Specifications

Model:		Chassis No:	JTFLA3CP106004938	Grade:		Fuel:	Diesel
Engine:	1GD	Drive Train:	2WD	Dimensions:	27 M ³	Shape:	VAN
Engine No:	2023	Transmission:	AT	Mileage:	291167	Capacity:	2800cc
Ext. Color:		Weight (kg):		Seats:	6	Color:	
Certification:		Classification:		Exterior:	WHITE	Interior:	GRAY BEIGE

Vehicle images



Vehicle Options

Pwr Steering	Yes	Pwr Wind	Yes	Pwr Mirrors	Yes	Center Lock	Yes	Air Cond	Yes
Reverse Camera	Yes	Pwr Slide Door		Easy Closer		Cruise Control		ABS	
Air Bag	Yes	Fog Lamps	Yes	HID Head Lamps		LED Head Lamps		Spare Key	
Remote Key		Push Start		Seat Heater		Pwr Seat		Leather Seat	
Floor Mat		Sun Roof		Alloy Wheels		Grill Guard		Rear Wiper	
Rear Spoiler		Stereo (FULL)		Navi/TV		CD Player		Car MD	
AUX		Spare Tire		Spare Tire Case		Puncture Repairing Kit		Tool	
Jack		Operators Manual		Maint. Record		360 Degree Camera		AM/FM Radio	Yes
4WD		2WD		Back Tire		TV	Yes	Body Kit	
Side Skirts		Front Lip Spoiler		Turbo		Side Airbag		Wheel Spanner	

ESC		Keyless Entry		Front Airbags		Climate Control		Premium Lights	
Premium Wheels/Rims		Premium Paint		Racing Seats		Performance Tyres			