



PERFECT MOTORS

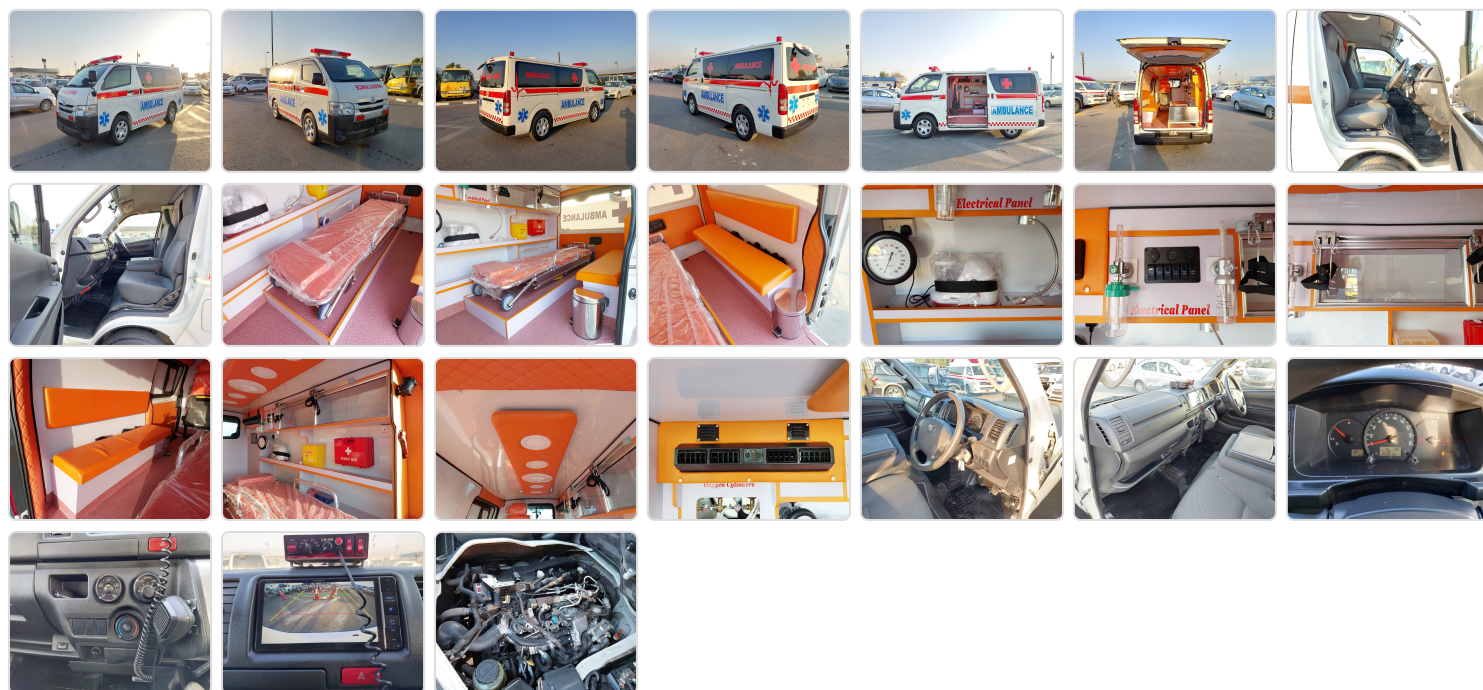
TOYOTA HIACE AMBULANCE
Stock ID 274473

Registration Year: 2014
Manufacture Year: 0

Vehicle Specifications

Model:		Chassis No:	KDH201-0134497	Grade:		Fuel:	Diesel
Engine:	1KD-FTV	Drive Train:	2WD	Dimensions:	19 M ³	Shape:	VAN
Engine No:	2023	Transmission:	AT	Mileage:	253600	Capacity:	3000cc
Ext. Color:		Weight (kg):		Seats:	6	Color:	
Certification:		Classification:		Exterior:	WHITE RED	Interior:	GRAY

Vehicle images



Vehicle Options

Pwr Steering	Yes	Pwr Wind	Yes	Pwr Mirrors	Center Lock	Air Cond	Yes
Reverse Camera		Pwr Slide Door		Easy Closer	Cruise Control	ABS	
Air Bag	Yes	Fog Lamps		HID Head Lamps	LED Head Lamps	Spare Key	
Remote Key		Push Start		Seat Heater	Pwr Seat	Leather Seat	
Floor Mat		Sun Roof		Alloy Wheels	Grill Guard	Rear Wiper	
Rear Spoiler		Stereo (FULL)		Navi/TV	CD Player	Car MD	
AUX		Spare Tire		Spare Tire Case	Puncture Repairing Kit	Tool	
Jack		Operators Manual		Maint. Record	360 Degree Camera	AM/FM Radio	Yes
4WD		2WD	Yes	Back Tire	TV	Body Kit	
Side Skirts		Front Lip Spoiler		Turbo	Side Airbag	Wheel Spanner	
ESC		Keyless Entry		Front Airbags	Climate Control	Premium Lights	
Premium Wheels/Rims		Premium Paint		Racing Seats	Performance Tyres		

